

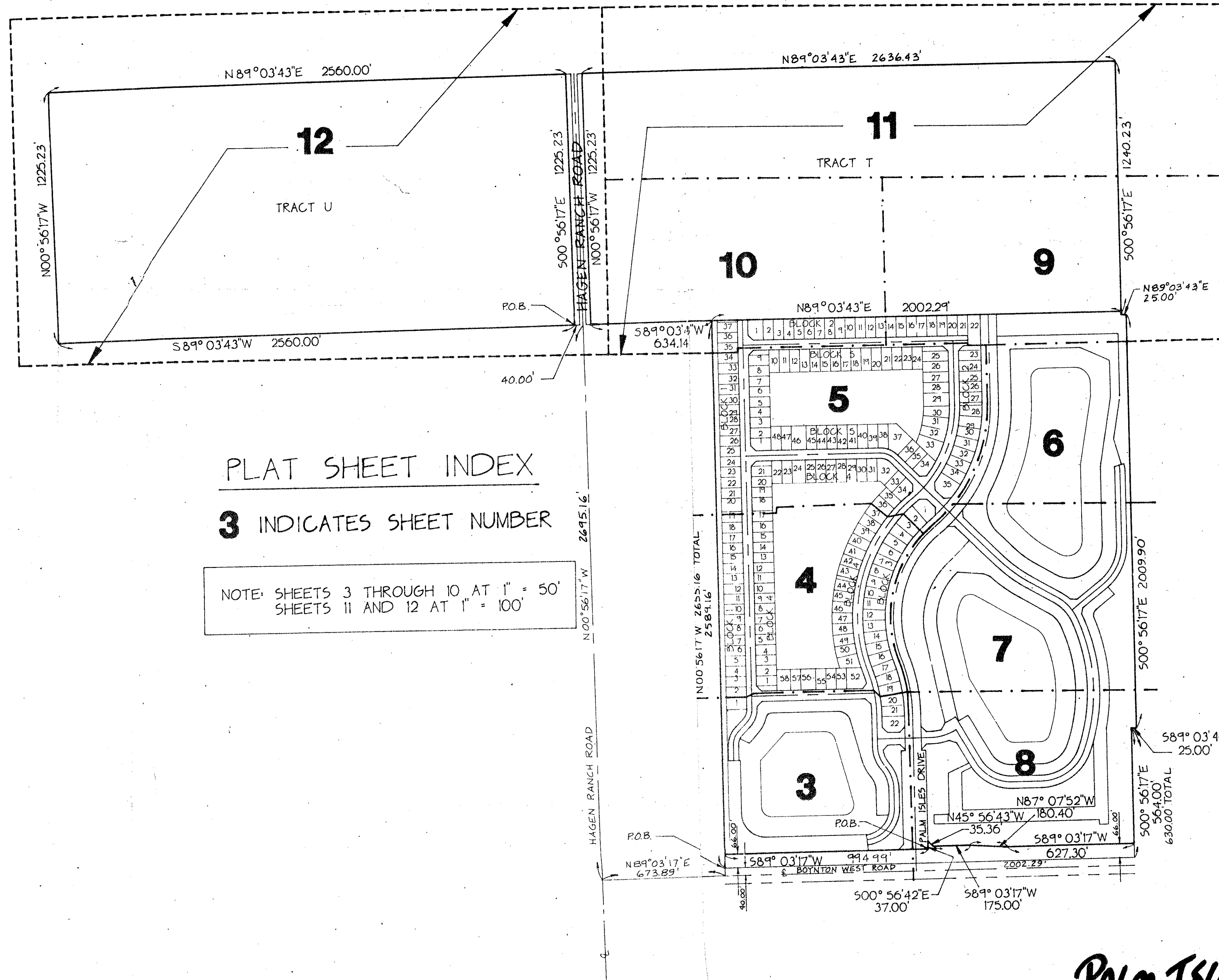
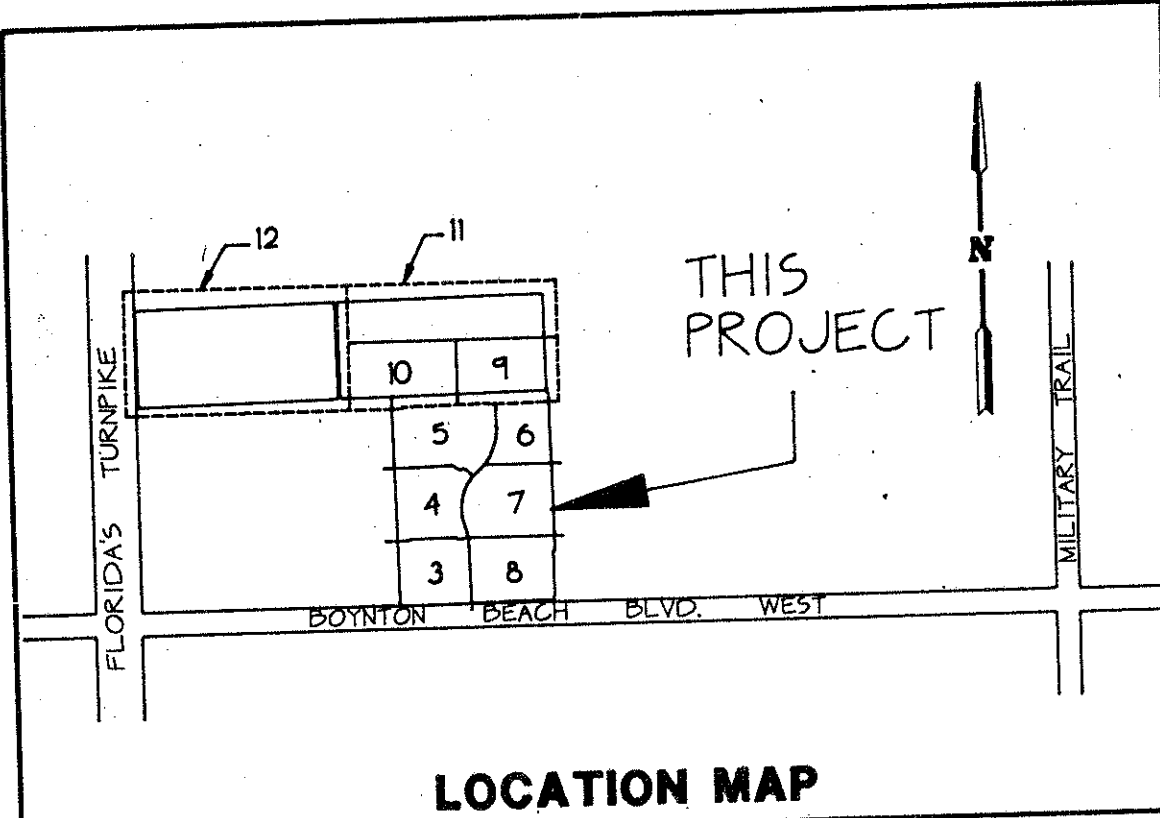
PALM ISLES, A P.U.D.

571-001

A REPLAT OF A PORTION OF BLOCK 49 OF PALM BEACH FARMS COMPANY PLAT NO. 3 AS RECORDED IN PLAT BOOK 2, PAGES 45 THROUGH 54 INCLUSIVE OF THE PUBLIC RECORDS OF PALM BEACH COUNTY, FLORIDA IN SECTION 21, TOWNSHIP 45 SOUTH, RANGE 42 EAST, PALM BEACH COUNTY, FLORIDA

THIS INSTRUMENT PREPARED BY JAMES E. PARK, P.L.S. WILLIAMS, HATFIELD & STONER, INC. - ENGINEERS PLANNERS SURVEYORS 1325 SOUTH CONGRESS AVENUE, SUITE 118, BOYNTON BEACH, FLORIDA 33426

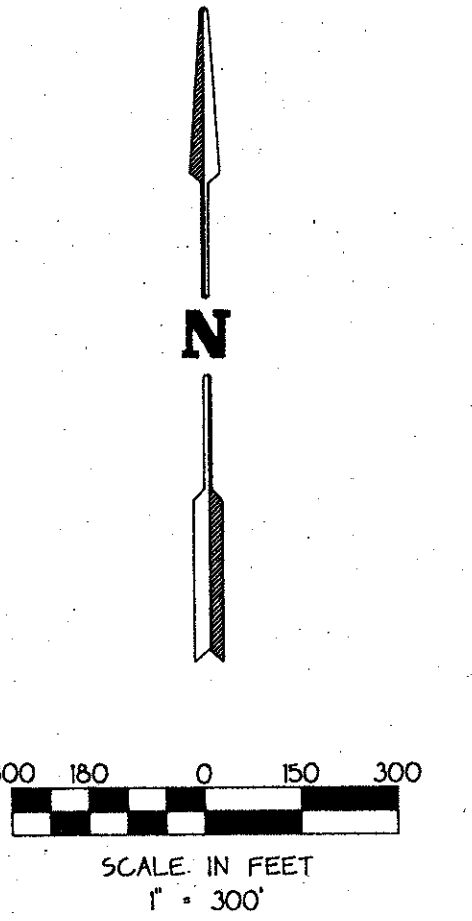
SHEET 2 OF 12



PLAT SHEET INDEX

3 INDICATES SHEET NUMBER

NOTE: SHEETS 3 THROUGH 10 AT 1" = 50'
SHEETS 11 AND 12 AT 1" = 100'



TAL 443

ISSUES
PAGE 117
FLOOD MAP #185A
ZONING R6
DATE 08-23-97
BY JAMES E. PARK
2/15/92

Pet. 87-92
Alloc. #0001

0571-001

PALM ISLES, A P.U.D. 07/117